

FME2404 – 2400 lb Flake Ice Machine

Modular Flake Ice Machine with *AutoSentry™*



Shown on B948S bin with optional KLP8S legs..

Key Advantages

AutoSentry™ Monitoring System constantly checks workload on gearbox shutting down system before a problem develops preventing costly repairs.

Electrical conductivity water sensor eliminates low or no water failures and cannot be affected by adverse water conditions.

Plastic drain pan with larger outlet provides greater ability to quickly channel water away preventing particulate build-up and rust.

Rust and restriction free drain system features one-piece plastic drain tubes with larger ID for obstruction-free water flow.

Durable, high grade stainless steel construction with massive, self-aligning spherical roller bearings; patented double-flight auger that evenly distributes the load; and heavy duty direct drive gearbox for high reliability and long life.

Industry leading 3 year parts and labor warranty.

24 Hour Volume Production

Air Cooled

| 70°F/21°C 50°F/10°C lb/kg | Air Water | 90°F/32°C 70°F/21°C lb/kg |
|---------------------------------|--------------|---------------------------------|
| 2455/1114 | | 1800/816 |



Modular Bin Options

| Model Number | Dimensions W" x D" x H" | AHRI Certified Bin Capacity lb/kg | Application Capacity lb/kg | Finish | Ship Weight lb/kg |
|--------------|-------------------------|-----------------------------------|----------------------------|-------------|-------------------|
| B842S* | 42 x 34 x 44** | 778/353 | 610/277 | SS | 185/84 |
| B948S* | 48 x 34 x 44** | 700/319 | 893/406 | SS | 220/100 |
| BH1100BB* | 48 x 34 x 50** | 860/390 | 1100/499 | SS w/GBB*** | 280/127 |
| BH1100SS* | 48 x 34 x 50** | 860/390 | 1100/499 | SS | 280/127 |
| BH1300BB* | 60 x 34 x 50** | 1100/499 | 1400/635 | SS w/GBB*** | 310/140 |
| BH1300SS* | 60 x 34 x 50** | 1100/499 | 1400/635 | SS | 310/140 |
| BH1600BB* | 60 x 34 x 62** | 1755/796 | 1375/624 | SS w/GBB*** | 370/168 |
| BH1600SS* | 60 x 34 x 62** | 1755/796 | 1375/624 | SS | 370/168 |

*See price list for Bin Top. ** Add 6"H for bin legs.



Bin: BH1300SS-A

Flake Ice

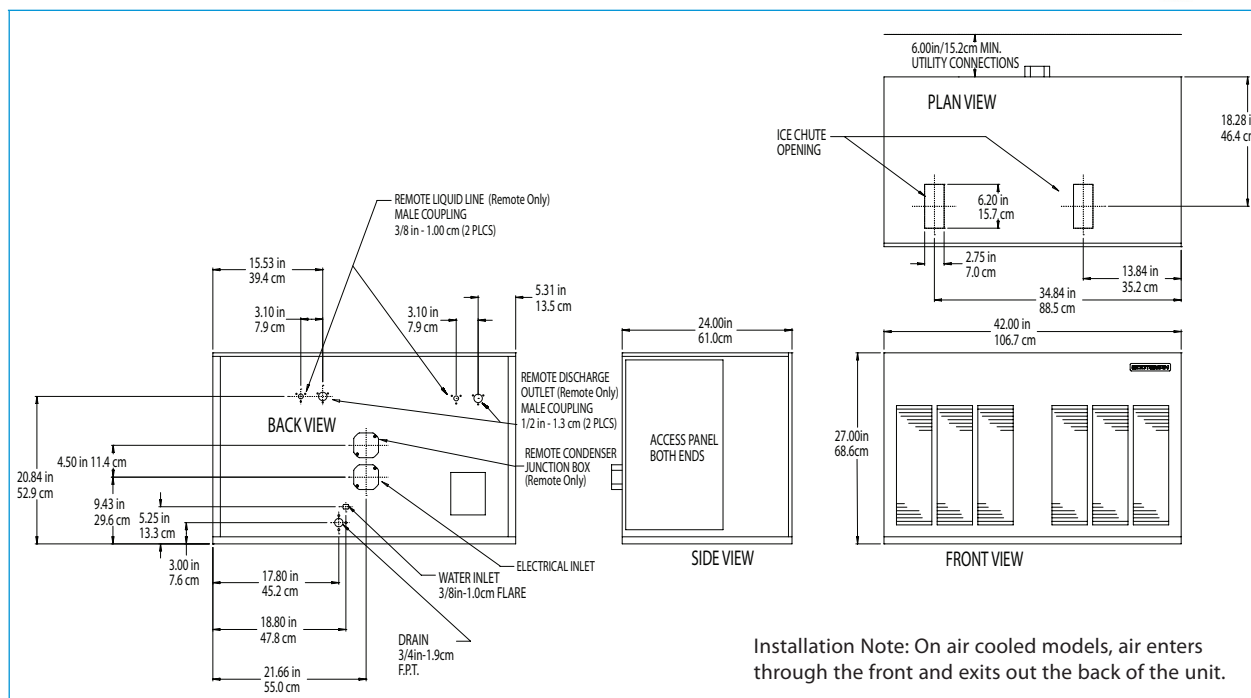


Cools more quickly than other ice forms. Used in produce and fish displays.

Warranty

- 3 years parts and labor on all components.
- 5 years parts on the compressor.

Warranty valid in North, South & Central America. Contact factory for warranty in other regions.



Specifications

| Model Number | Condenser Unit | Basic Electrical Volts/Hz/Phase | Max. Fuse Size or HACR Circuit Breaker (amps) | Circuit Wires | Min. Circuit Ampacity | Water Usage Gallons/100 lb (liters/45.4 kg) | | |
|--------------|----------------|---------------------------------|---|---------------|-----------------------|---|-------------------------------|---------------------------------|
| | | | | | | Energy Consumption kWh/100 lb (45.4 kg) 90°F(32°C)/70°F(21°C) | Potable 90°F(32°C)/70°F(21°C) | Condenser 90°F(32°C)/70°F(21°C) |
| FME2404AS-32 | Air | 208-230/60/1 | 25 | 2 | 20.6 | 3.26 | 12.0/45.5 | - |

All Models

Dimensions (W x D x H):

Unit:

42" x 24" x 27"
(106.7 x 61.0 x 68.6 cm)

Shipping Carton:

45.5" x 27.5" x 32"
(115.6 x 69.85 x 81.3 cm)

Shipping Weight:

425 lb/193 kg

BTUs per hour:

15,800

Accessories

| Model Number | Description |
|--------------|-------------|
| | |

* Scotsman recommends all ice machines have water filtration. See Scotsman Sanitation Matrix for details.

Operating Requirements

| | Minimum | Maximum |
|---------------------------|-------------------|-----------------|
| Air Temperatures | 50°F (10°C) | 100°F (38°C) |
| Water Temperatures | 40°F (4.4°C) | 100°F (38°C) |
| Remote Cond. Temps | -20°F (-29°C) | 120°F (49°C) |
| Water Pressures | 20 PSIG (1.4 bar) | 120 PSIG (bar) |
| Electrical Voltage | -5% | +10% |

Specifications and design are subject to change without notice.

Scotsman Ice Systems • 775 Corporate Woods Parkway • Vernon Hills, IL 60061

1-800-SCOTSMAN

Fax: 847-913-9844

E-mail: customer.relations@scotsman-ice.com

www.scotsman-ice.com

© 2013 Scotsman Ice Systems.

SIS-SS-FLK-FME2404
01-13